



SMOOTH MOVES® ULTRA INSTALLATION INSTRUCTIONS

CONGRATULATIONS ON THE PURCHASE OF YOUR SMOOTH MOVES ULTRA BOAT SEAT SUSPENSION!

The installation of this suspension can easily be done by following the step-by-step directions outlined below. In addition, please check out our videos and other helpful tutorials at: SmoothMovesSeats.com/support.

YOUR KIT INCLUDES:

- Suspension with mounting box attached
- Swivel
- Hardware Bag with bolts, washers, and nuts

NOTE: You will need a 7/16" socket wrench to tighten the bolts.



PREPARING YOUR EXISTING SEAT AND BOAT FLOOR

- 1 Remove your seat cushion and the swivel and/or slide from your existing pedestal.
- 2 Remove the swivel and/or slide from the bottom of your seat cushion. **KEEP THE BOLTS** that attached the swivel to the bottom of the seat. You will need these bolts later to attach the black mounting plate provided in the kit.
- 3 If you have a removable pedestal, remove it from the pedestal base.
- 4 Remove the pedestal base from the boat floor by removing the six screws around the base from the floor. **KEEP THESE SIX SCREWS**, as you will need them later.

YOU ARE NOW READY TO INSTALL YOUR SMOOTH MOVES ULTRA!

- 5 The **box base** is attached to the suspension for ease of shipping and consists of two pieces. Unscrew the four bolts that are hand tightened and that hold the two box pieces together.
- 6 Take the half of the box base that is not attached to the suspension and **turn it upside down** so that the 12 bolt holes that form a circle lay flat to the floor and the extended sides are parallel to the sides of the boat. Line up six of the holes in the box base with the holes in the boat floor where your previous pedestal was attached. Using the six screws that you removed from the original pedestal base (Step 4), fasten the box base to the floor.
- 7 **Turn the suspension over** so that the top half of the box base faces down and set it over the bottom of the box base that you attached to the floor in Step 6.

NOTE: The adjustment handle on the suspension should face forward in your boat.

Position the box halves so that the holes in each corner are aligned. Replace the four bolts that you took out in step 5 (one in each corner of the box base) and fasten the two box halves back together. When completed it should look like the image to the right:



Instructions continued on next page

PREP

INSTALL



SMOOTH MOVES® ULTRA INSTALLATION INSTRUCTIONS (CONTINUED)

INSTALL

- 8 Next, **fasten your seat cushion to the swivel**. You must decide if you want the swivel locking handle to face to the inside of the boat or to the outside of the boat. We recommend the inside so that it is easier to access. Place the swivel on top of the bottom of your seat cushion. The side of the swivel with the four slats should be placed over the four holes in your seat cushion. Unlock the swivel handle by turning the handle a quarter-turn and rotate the swivel slightly so that the hole in the suspension mounting plate is over the hole in your seat cushion. You will then be able to insert the bolt/screw you removed in step 2 and tighten with screwdriver/socket wrench. Repeat for other 3 screws by continuing to turn the swivel so that you can access the remaining holes.
- 9 Finally, take the **seat cushion** with the swivel attached and mount to the Smooth Moves ULTRA suspension. On one side, raise the **black lever** along the side of the rail and on the opposite side without a lever cut the zip tie. Slide the rails forward to expose the two holes on the end of both slide rails. Line up the bushings on the black mounting plate to the holes on the end of the slide rails.
- 10 Using the bolts and washers provided in your Ultra Kit, place the two bolts through the two holes at the end of the slide rail and **hand tighten** to attach to the seat cushion. Slide the suspension the other direction and secure the other two bolts. When the bolts are **hand tight** slide the rails back and forth 4-5 times. Sliding the rails back and forth is necessary to square up the rails; ensuring a smooth slide.

Once rails have been squared up, slide one end of the rails out just far enough to tighten the bolts with the socket wrench. Then carefully slide the rails the other way just enough to tighten the bolts on the other side. Check to ensure that the rails slide smoothly.



ADJUST

ADJUSTING YOUR SMOOTH MOVES ULTRA

- 11 Pulling the **black lever** (1) at the top of the suspension out away from the suspension will allow you to slide the seat fore and aft.
- 12 The long **gray handle** (2) on the suspension is for adjusting the seat to your body weight. You should adjust the tension so that when you sit on the suspension it gives just a little and compresses about 1/2 inch. You can increase tension by turning the gray handle clockwise and decrease tension by turning it counter clockwise. If you are in rough waters with large waves increase the tension to avoid having the suspension bottom out. You can decrease the tension when you are in lighter waves.
NOTE: Once adjusted, leave the handle in the horizontal position. This prevents it from harming the rubber boot. If the handle is pointed down in the vertical position it can pinch the rubber boot against the internal mechanism and tear the boot.
- 13 The round **gray knob** (3) at the bottom of the suspension is for adjusting height. It is easiest to adjust the height while sitting on the seat because it takes pressure off the springs and allows the knob to turn easier. Turn the knob counter clockwise to raise the seat and clockwise to lower.





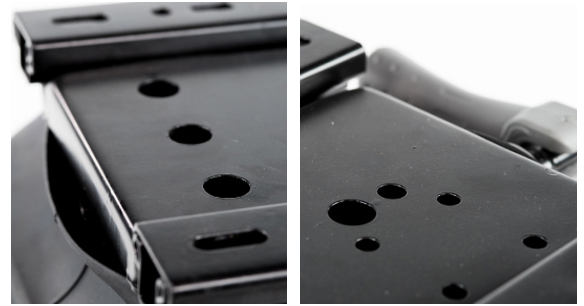
SMOOTH MOVES® ULTRA MAINTENANCE

MAINTAIN

MAINTAINING YOUR SMOOTH MOVES ULTRA

If you store your boat for winter or any length of time we recommend relieving the tension on the springs. This can be done by turning the long gray handle counter clockwise.

Once a year if your boat is in fresh water and twice a year if in salt water; we recommend lubricating the springs. This can be done through the holes on the top of the suspension (see photos at right). You can reach these holes by sliding the seat all the way back and all the way forward. Use silicone or any other preferred lubricant. A spray can with a straw attached works the best to spray into the holes. Be careful not to over lubricate causing lubricant to run out the bottom.



REMINDERS

HELPFUL TIPS FOR SEAT ADJUSTMENTS

Weight: After you have installed your suspension, adjust for your weight. When setting the tension for your weight a good starting point is to adjust the tension so that you feel the springs just start to give when you sit on the seat, compressing about ½ inch. Once adjusted turn the long gray handle to the horizontal position to protect the rubber boot.

Height: When adjusting the height of the suspension, the height adjustment knob will turn hard due to the spring tension against it. Remember to put some weight on the seat and it will turn easier. By putting weight on it; it relieves some of the spring pressure against it. Remember that the lower the height of the suspension or the more compact it is, the less travel you will have.

Rough Water: If you are in big waves and start to feel the suspension bottoming out or if you are getting too much "rebound" action tighten up the spring tension by turning the long grey handle clockwise.

QUESTIONS OR COMMENTS?

Feel free to contact us!

Call: 888-583-2701

Email: customerservice@smoothmovesseats.com

**THANK YOU FOR PURCHASING
SMOOTH MOVES, AND ENJOY THE RIDE!**